



# Travel Map Aysen Patagonia Chile



Useful tips for  
travellers



Tourist  
attractions

Download guide



Free tourist distribution material





# How to get to Aysén Patagonia?

## By Air

The most frequent and efficient way to access the region. The Balmaceda Airdrome is the main one and it is located at 56 km south from Coyhaique city.

- A).** -From Santiago to Balmaceda,  
Flight time: 2 hours & 15 min app  
Daily Frequency
- B).** -From Concepción to Balmaceda,  
Flight time: 1 hours & 45 min app  
2 times a week
- C).** -From Temuco to Balmaceda,  
Flight time: 1 hours & 35 min app.  
2 times a week
- D).** -From Puerto Montt to Balmaceda,  
Flight time: 1 hours app.  
Daily Frequency
- F).** -From Punta Arenas to Balmaceda,  
Flight time: 1 hours & 15 min. app.  
Weekly Frequency

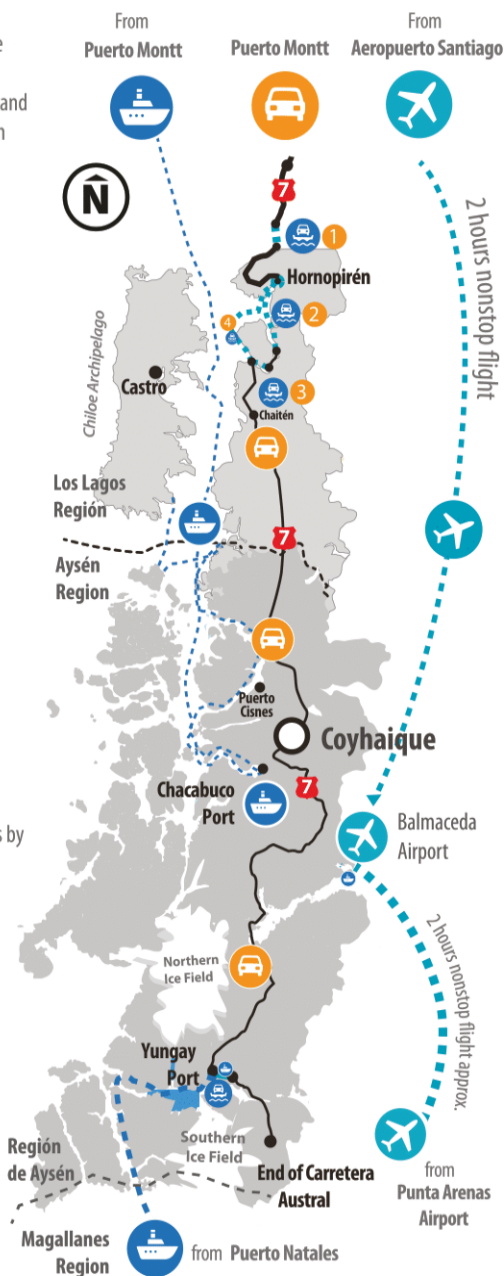
### Note:

At the airport of Balmaceda, it is possible to rent a car or take a shuttle bus. The price of the shuttle bus is around \$9.000 CLP. The trip lasts around 50 minutes through 56 km on a paved route.

## By Sea

There are several routes by ferry, the longest are:

- A).** - From Puerto Natales to Puerto Yungay: (41 hours) crossing the Patagonian fjords.
- B).** - From Quellón to Several Regional Ports:  
The Cordillera route connects the fjords and channels passing by Melinka, Raúl Marín Balmaceda, Melimoyu, Puerto Gala, Puerto Cisnes, Puerto Gaviota, Puerto Aguirre, and Puerto Chacabuco. The sailing could change between 5 to 36 hours depending on the destination port.



## Ferry Routes

- Route Chaitén** (7 a 12 hrs app.)  
Puerto Montt - Chaitén
- Route Cisnes**  
Quellón - Melinka - Puerto Cisnes  
(12 a 24 hrs app.)
- Route Aysén - Magallanes** (41 hrs app.)  
Puerto Natales - Puerto Yungay
- Route Chiloé** (8 hrs app.)  
Quellón - Chaitén
- Route Castro** (during Summer)  
Castro - Chaitén (5 hrs app.)
- Route Cordillera** (30 hrs app.)  
Quellón - Melinka - Raúl Marín Balmaceda  
Melimoyu - Puerto Gala - Puerto Cisnes  
Pto. Gaviota - Pto. Aguirre - Puerto Chacabuco

# Plan your Trip

There are 2 alternatives by land. Through the Carretera Austral, the Scenic Route of Patagonia, which starts in Puerto Montt in the Lake District. From there start the Bimodal route, subsidized by the State, connecting both regions. The other option to access the Aysén region is through Argentina passing by the border crossings joining both countries.



## A.-Bimodal Route

This route consists in a mix of two modalities: by land and sea. The route starts in Puerto Montt, bordering the Reloncaví Sound until Caleta La Arena and from there you take a ferry until Caleta Puelche, after that the road continues to Hornopirén to take the second ferry of 3 hours of sail. After you will land on Leptepú to follow the route to Fiordo Largo and take the third and last ferry to Caleta Gonzalo. Once in Caleta Gonzalo you can take the way to Chaitén and continue to the Aysén region.

### Ferry Sections:



**Section 1:** Operated by Transportes del Estuario, to reserve and buy your tickets visit the web site: [www.testuario.cl](http://www.testuario.cl)

**Sections 2+3:** Operated by SOMARCO, to reserve and buy your tickets visit the web site: [www.barcazas.cl](http://www.barcazas.cl)

**1 La Arena - Puelche:**  
39 trips per day ⌚ 30 minutes

**2 Hornopirén - Leptepú**  
1 daily trip in low season  
2 daily trips in high season

⌚ 3,5 hours

⌚ 3,5 hours

**3 Fiordo Largo - Caleta Gonzalo:**  
1 daily trip in low season  
2 daily trip in high season

⌚ 45 minutes

⌚ 45 minutes

Note: This 2 sections are combined into one, where the 2 ferries

## B.- Main Authorized Border Crossings

\* The border crossing that have custom offices are: Coyhaique Alto, Balmaceda, Jeinimeni and Futaleufú.

\* If you are leaving the region, through a border crossing that doesn't have a custom office, you should go to International Police (PDI), located in Avenida Baquedano 511, Coyhaique.

• **Futaleufú:** Located in the Lake District is about 423 km from Coyhaique.  
Route Type: Gravel & paved. *Estimated Time of Travel to Coyhaique: 8 hours.*

• **Coyhaique Alto:** Located about 45 km east from Coyhaique.  
Route Type: Gravel & paved. *Estimated Time of Travel to Coyhaique: 1 1/2 hour.*

• **Paso Huemules (Balmaceda):** Located about 55 km south east from Coyhaique.  
Route Type: paved. *Estimated Time of Travel to Coyhaique: 1 hour.*

• **Jeinimeni:** This border crossing is 4 km east from Chile Chico and 402 km from Coyhaique.  
Route Type: Gravel & paved. *Estimated Time of Travel to Coyhaique: 8 hours (bordering the lake)*

More Information  
about other border  
crossing points:



## Plan your Trip



By Air

**National Airlines:**  
[www.skyairline.cl](http://www.skyairline.cl)  
[www.dapairline.com](http://www.dapairline.com)  
[www.latam.com](http://www.latam.com)  
[www.jetsmart.cl](http://www.jetsmart.cl)

**Small Local Airlines:**  
MELINKA:  
[www.pewenchile.com](http://www.pewenchile.com)  
[www.aerocord.cl](http://www.aerocord.cl)  
CHILE CHICO & VILLA O'HIGGINS:  
[www.aerocord.cl](http://www.aerocord.cl)

By Land

**Border Crossings:**  
[www.difrol.gob.cl](http://www.difrol.gob.cl)

The bimodal route is operated by the company SOMARCO, to reserve and get your tickets  
[www.barcazas.cl](http://www.barcazas.cl)

By Sea or Lake

**Sailing companies:**

CONNECTIVITY WITH LAKE DISTRICT:  
[www.navieraustral.cl](http://www.navieraustral.cl)  
[www.barcazas.cl](http://www.barcazas.cl)

CHILE CHICO - PUERTO IBÁÑEZ:  
[www.ferrypatagonia.com](http://www.ferrypatagonia.com)

PUERTO YUNGAY - PUERTO NATALES:  
[www.tabsa.cl](http://www.tabsa.cl)

Follow us and find out more information in:



# Protected Wilderness Areas

51% of Aysén Patagonia is Protected Wilderness Area



- National Parks
- Natural Monuments
- National Reserves

Sea Access **SA** Land access **LA** Air Access **AA**

## National Parks

Name of the Unit	Area (HA)	Access
N.P. Laguna San Rafael	1.742.000	AA/SA
N.P. Queulat	154.093	LA
N.P. Isla Guamblin	10.625	SA
N.P. Isla Magdalena	249.712	SA
N.P. Bernardo O'Higgins	921.000	SA
N.P. Cerro Castillo	179.550	LA
N.P. Patagonia	304.527,75	LA
N.P. Melimoyu	105.499	SA
<b>Total Area N.P.</b>	<b>3.666.956,75</b>	

## Natural Monuments

Name of the Unit	Area (HA)	Access
N.M. Dos Lagunas	180,7	LA
N.M. Cinco Hermanas	228	SA
<b>Total Area N.M.</b>	<b>408,7</b>	

## National Reserves

Name of the Unit	Area (HA)	Access
N.R. Lago Rosselot	12.725	LA
N.R. Las Guaitecas	1.097.975	SA
N.R. Lago Carlota	18.060	LA
N.R. Lago Las Torres	16.516	LA
N.R. Río Simpson	41.620	LA
N.R. Coyhaique	2.150	LA
N.R. Katalalixar	674.500	SA
N.R. Trapananda	2.305	LA
<b>Total Area N.R.</b>	<b>1.865.851</b>	

**Total Area Protected Wilderness Areas 5.533.216,45 HA**

- 1 Nat. Res. Lago Rosselot. 2 Nat. Park Melimoyu. 3 Nat. Park Queulat. 4 Nat. Park Isla Magdalena.
- 5 Nat. Park Isla Guamblin. 6 Nat. Res. Guaitecas. 7 Nat. Res. Lago Carlota. 8 Nat. Res. Lago Las Torres.
- 9 Nat. Res. Trapananda. 10 Nat. Res. Río Simpson. 11 Natural Monument Cinco Hermanas. 12 Nat. Res. Coyhaique.
- 13 Natural Monument Dos Lagunas. 14 Nat. Park Cerro Castillo. 15 Nat. Park. Lag. San Rafael.
- 16 Nat. Park Patagonia. 17 Nat. Res. Katalalixar. 18 Nat. Park Bernado O'Higgins.

Check times and ticket rates:

 [www.paseparques.cl](http://www.paseparques.cl)

Check the updated status of the National Parks:

 [www.conaf.cl/parques-nacionales/](http://www.conaf.cl/parques-nacionales/)



Location	Information	Gas Station	Bank	Internet	Telephone	Mobile Network	Supermarket	Mechanical Service	Police	Hospital	First Aid	ATM
Pto. Montt	●	●	●	●	●	●	●	●	●	●	●	●
Hornopirén	●	●	●	●	●	●	●	●	●	●	●	●
Futaleufú	●	●	●	●	●	●	●	●	●	●	●	●
Alto Palena	●	●	●	●	●	●	●	●	●	●	●	●
Villa Santa Lucía				●	●	●	●	●			●	●
Pto. Raúl Marín B.					●	●	●	●	●		●	●
La Junta	●	●		●	●	●	●	●	●	●	●	●
Lago Verde				●	●	●	●	●	●	●	●	●
Puyuhuapi	●	●		●	●	●	●	●	●	●	●	●
Puerto Cisnes	●	●	●	●	●	●	●	●	●	●	●	●
Villa Amengual				●	●	●	●	●			●	●
Mañihuales		●		●	●	●	●	●	●	●	●	●
Puerto Aysén	●	●	●	●	●	●	●	●	●	●	●	●
Coyhaique	●	●	●	●	●	●	●	●	●	●	●	●
Cerro Castillo	●	●		●	●	●	●	●	●	●	●	●
Puerto Ibáñez	●			●	●	●	●	●	●	●	●	●
Bahía Murta				●	●	●	●	●	●	●	●	●
Chile Chico	●	●	●	●	●	●	●	●	●	●	●	●
Puerto Sánchez				●	●	●					●	●
Puerto Tranquilo	●	●		●	●	●	●	●	●	●	●	●
Puerto Guadal		●		●	●	●	●	●	●	●	●	●
Puerto Bertrand					●	●	●				●	●
Cochrane	●	●	●	●	●	●	●	●	●	●	●	●
Tortel	●	●		●	●	●	●	●	●	●	●	●
Villa O'Higgins	●	●		●	●	●	●	●	●	●	●	●

## Coyhaique - Punta Arenas / Vía Argentina

### Coyhaique

120 Chile Chico\*

133 13 Los Antiguos

189 69 56 Perito Moreno

338 218 205 125 Bajo Caracoles

563 443 430 352 225 Gobernador Gregores

672 552 539 460 334 171 Tres Lagos

794 674 661 582 456 293 122 (El Chaltén)

831 711 698 624 493 477 159 212 El Calafate

1336 1216 1203 1146 863 644 350 403 252 Río Turbio

1343 1223 1210 1153 870 651 357 410 259 7 Villa Dorotea

1360 1240 1227 1170 887 668 374 427 274 31 24 Puerto Natales

1582 1462 1449 1392 1109 890 596 649 498 277 270 246 Punta Arenas

### ARGENTINIAN CITIES

\*The route considers the ferry in general carrera lake.

# Chart Distances

Chaitén																									
154	La Junta																								
198	44	Puyuhuapi																							
287	133	89	Puerto Cisnes																						
340	186	142	117	Villa la Tapera																					
286	132	88	63	54	Villa Amengual																				
345	191	147	122	109	59	Villa Mañihuales																			
417	263	219	194	181	131	72	Puerto Chacabuco																		
403	249	205	180	167	117	58	14	Puerto Aysén																	
420	266	222	197	184	134	75	79	65	Coyhaique																
475	321	277	252	239	189	130	134	120	55	Balmaceda															
514	360	316	291	276	228	169	173	158	94	61	Villa Cerro Castillo														
540	386	342	317	304	254	195	199	185	120	84	38	Puerto Ibáñez													
618	464	420	395	382	332	273	277	263	198	162	102	144	Bahía Murta												
638	484	440	415	402	352	293	297	283	218	182	122	164	30	Pto. Río Tranquilo											
667	513	469	444	431	381	322	326	312	247	211	151	193	59	29	Sector El León										
688	534	490	465	452	402	343	347	333	268	232	172	214	80	50	21	El Maitén									
697	543	499	474	461	411	352	356	342	277	241	182	223	89	59	30	9	Puerto Guadal								
729	575	531	506	493	443	384	388	374	309	273	214	255	121	91	58	41	32	Mallín Grande							
803	694	605	580	567	517	458	462	448	383	347	288	329	195	165	136	115	106	74	Chile Chico						
705	551	507	482	469	419	360	364	350	285	249	189	231	97	67	38	17	26	58	132	Puerto Bertrand					
754	600	556	531	518	468	409	413	399	334	298	238	280	146	116	87	66	75	107	181	49	Cochrane				
882	728	684	659	646	596	537	541	527	462	426	361	408	274	244	215	194	203	235	309	117	128	Caleta Tortel			
879	725	681	656	643	593	534	538	524	459	423	363	405	271	241	212	191	200	232	306	174	125	43	Puerto Yungay		
991	837	793	768	755	705	646	650	636	571	535	471	517	383	353	324	303	312	344	419	286	237	155	112	V. O'Higgins	

## North Zone

Coyhaique Regional capital

## South Zone

- Distances are calculated from the Main Square of Coyhaique.
- The distances between the towns is calculated based on the shortest route and not necessarily on a paved road.
- To get to Villa O'Higgins by road it is necessary to take a ferry across the Mitchell Fjord between Puerto Yungay and Río Bravo. It is a trail of 12 km, with a 45-minute navigation approx.
- Distances from Puerto Chacabuco and Puerto Aysen on the way to the north are calculated using the paved road from Viviana that branches the route Coyhaique/Puerto Aysen.

SOURCE: Prepared by SERNATUR with information provided by the Regional Highway Office Aysen Region.

## Coyhaique - Puerto Montt / Vía Argentina

### Puerto Montt

105	Osorno																		
207	102	Paso Pajaritos																	
350	245	143	Bariloche																
503	398	296	153	El Bolsón															
660	555	453	310	157	Esquel														
750	645	543	400	247	90	Tecka													
838	733	631	488	335	178	88	José de San Martín												
1075	970	868	725	572	415	325	237	Río Mayo											
1205	1100	998	855	705	545	455	367	130	Coyhaique Alto										
1250	1145	1043	900	747	590	500	412	175	45	Coyhaique									

## ARGENTINIAN CITIES

## Distance from Futaleufú to:

Chaitén ▶ 156 Km  
 Villa Sta. Lucía ▶ 81 km  
 La Junta ▶ 154 km  
 Puyuhuapi ▶ 198 km

Coyhaique ▶ 412 km  
 Cochrane ▶ 766 km  
 Villa O'Higgins ▶ 978 km  
 Esquel ▶ 73 km

El Bolsón ▶ 250 km  
 Bariloche ▶ 380 km  
 Osorno ▶ 661 km  
 Puerto Montt ▶ 760 km

# Road Conditions

The Carretera Austral is a young route, many of its roads are still made of gravel. Only 12% of the roads of the Aysén region are paved. This is why, there are continuous works to improve the route and accomplish a better regional connectivity. The following table informs about the road conditions:

Town	Destination	KM	Hours	Road Condition (Paved &/or Gravel)	
La Junta	▶ Raúl Marín Balmaceda	75	2	Gravel	}  Includes ferry at Palena River
La Junta	▶ Lago Verde	74	1,5	Gravel	
La Junta	▶ Puyuhuapi	46	1	Paved	
Puyuhuapi	▶ Pto. Cisnes	89	3	90% Paved	
Puyuhuapi	▶ Villa Amengual	88	3	90% Paved	
Pto. Cisnes	▶ Villa Amengual	63	1	Paved	
Villa Amengual	▶ Villa Mañihuales	59	1	Paved	
Villa Mañihuales	▶ Pto. Aysén	58	1	Paved	
Villa Mañihuales	▶ Coyhaique	75	1,5	Paved	
Pto. Aysén	▶ Pto. Chacabuco	14	15 min.	Paved	
Pto. Aysén	▶ Coyhaique	65	1	Paved	
Coyhaique	▶ Balmaceda	55	1	Paved	
Coyhaique	▶ Chile Chico	120	2	Paved	}  Includes ferry at General Carrera Lake
Coyhaique	▶ Villa Cerro Castillo	98	1,5	Paved	
Villa Cerro Castillo	▶ Pto. Ibañez	38	35 min.	Paved	
Villa Cerro Castillo	▶ Pto. Tranquilo	122	2,5	Gravel	
Pto. Tranquilo	▶ Pto. Bertrand	67	1	Gravel	
Pto. Tranquilo	▶ Pto. Guadal	59	1,5	Gravel	
Pto. Guadal	▶ Chile Chico	106	2,5	Gravel	
Puerto Guadal	▶ Mallín Grande	32	45 min.	Gravel	
Mallín Grande	▶ Chile Chico	74	1,5 hrs	Gravel	
Pto. Bertrand	▶ Cochrane	49	1	Gravel	
Cochrane	▶ Caleta Tortel	128	2,5	Gravel	
Cochrane	▶ Villa O'Higgins	237	5	Gravel	}  Includes ferry at Mitchell Fjord
Caleta Tortel	▶ Villa O'Higgins	155	3,5	Gravel	



## Regional Ferries

Monday To Sunday

Regular Season (Apr. - Oct.)  
 High Season (Nov. - Mar.)

### Palena River Ferry

### La Tehuelche Ferry General Carrera Lake

### Padre Antonio Ronchi Ferry Mitchell Fjord

08:30 a 13:00 hrs.  
13:30 a 18:30 hrs.

[www.ferrypatagonia.com](http://www.ferrypatagonia.com)  
Check prices and departure times at the website

08:30 a 13:00 hrs.  
13:30 a 17:30 hrs.

Puerto Yungay - Río Bravo  
10:00 Hrs./ 12:00 Hrs./15:00 Hrs. / 18:00 Hrs.  
 Río Bravo - Puerto Yungay  
11:00 Hrs./ 13:00 Hrs./16:00 Hrs./ 19:00 Hrs.

Puerto Yungay - Río Bravo  
12:00 Hrs./ 15:00 Hrs.  
 Río Bravo - Puerto Yungay  
13:00 Hrs./ 16:00 Hrs.

# Carretera Austral

## Scenic Route of the Patagonia

Globally recognized as an ideal place to enjoy of the best landscapes, the Carretera Austral joins 1.240 km from Puerto Montt (in the Lake District) to Villa O'Higgins (southern limit of Aysen Region). The route in some parts is an urban highway and in others a rural way. Also it has some parts where a ferry is needed, through fjords crossing several rivers, lakes and different types of forests. The road offers to the visitors a surprising trip across different landscapes which go from evergreen forest to Trans Andean forests through channels and fjords, lakes of multiple colors, amazing glaciers, wide pampas, impressive rivers, national parks and reserves. An experience you will never forget and we invite you to know.



## Activities & Excursions to do in the Carretera Austral in Aysen Patagonia



Hiking to watch the "Vetisquero Colgante" in Queulat National Park.



Visit the Puerto Cristal mining camp, declared a Historical Monument.



Rafting and rafting on the Baker River, the largest river in Chile.



Observation of fauna, flora and geological formations in Patagonia National Park.



Practice kayaking and recreational fishing in its several rivers, lakes and lagoons.



Navigation to Laguna San Rafael, declared a Biosphere Reserve by UNESCO.



Hike on the Northern and Southern Ice Field Glaciers, one of the main water reserves in the world.



Walk through Caleta Tortel, a town declared a Typical Zone for its cypress walkways.



Panoramic view of Lake General Carrera, the second largest lake in South America.



Visit the Marble Chapels in Puerto Tranquilo, declared a Nature Sanctuary.



# Destination Carretera Austral Norte

## Queulat National Park

The park has a surface of 154,093 Ha. Its main attraction and the reason why so many people visit the park is the Ventisquero Colgante (Hanging Glacier) which feeds many waterfalls and rivers and together with the exuberant vegetation as a result of its rainy coastline weather.

The park has: an Administration Center, camping and picnic areas and 3 hiking trails, of medium and high difficulty. These trails allow walking around and appreciating as the variety of flora and fauna of the park, the Tempanos Lagoon and the Ventisquero Colgante.



Raúl Marín Balmaceda

## Fjords and Channels

The fjords and channels of Aysen are characterized by its scattered zone with its several islands and islets of exuberant vegetation. You will enjoy trail through evergreen forest, archeological sites, sea wildlife as birds, sea lions, dolphins and whales. Also in this zone are some towns as Melinka, Repollal, Puerto Gala, Puerto Cisnes, Puerto Aguirre, Raúl Marín Balmaceda, Melimoyu and others. Here you will know the culture of the fishermen who live between the sea and the land.



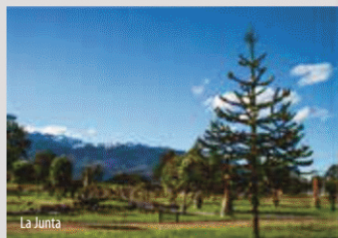
National Park Queulat



Río Palena

## Puerto Puyuhuapi

This picturesque town has a noticeable German influence in the architecture and it is framed by high mountains covered by evergreen forests. (it is about 222 km. from Coyhaique)



La Junta

## The Palena Basin

The northern entry to the region includes the towns of Lago Verde to the east, Raúl Marín Balmaceda to the west and La Junta (The Gathering) in between. La Junta is located over the wide Palena river valley.

# Destination Aysén - Coyhaique

## Puerto Chacabuco

The main port of Aysen Region, located 81 km from Coyhaique and from where ferries sail to San Rafael Lagoon. As also an endless journey through fjords and channels that give life to all the coast of this dismembered region. This vast and insular geography together with snowy mountains and exuberant and colorful vegetation form, as in a painting, an impressive landscape at the end of the world.



Puente Presidente Ibañez

## Puerto Aysen

It is the second most important town in the region with more than 20 thousand inhabitants. It stands out for its architecture, where the constructions of native wood prevail. Its main attraction is the Presidente Ibañez Bridge, which is a Historical Monument and the longest hanging bridge of Chile and attracts attention because its important structure.

# Destination Lago General Carrera

## Marble Chapels Nature Sanctuary

The "Marble Chapels" Nature Sanctuary is a Natural Monument and it's a group of islands and small islets where its main compound is molded marble, located in the General Carrera Lake between the towns of Puerto Río Tranquilo and Puerto Eulogio Sanchez. Its important scientific, scenic, touristic value and its contribution to the local identity and economic development of Puerto Tranquilo. This has let know these islands as geological patrimony of national relevance, which translates to thousands of visitors who enjoy every year the routes through its big caves and caverns surrounded by its characterized turquoise waters.

## Puerto Río Tranquilo

This lake side town is found on the western side of General Carrera Lake. It is the hub for visits to the Marble Chapels Natural Sanctuary and the Exploradores Glacier, Leones Valley and from 2010 there is a new route to access the Pacific Ocean and to the well-known San Rafael Lagoon.

## Chile Chico

A border town located on the south shore of General Carrera Lake and just 9 km from Los Antiguos in Argentina. The international border crossing "Jainimemi" is one of the most frequently used in the region. From this town, it is possible to make land connections to the south and north of the region bordering the General Carrera Lake and by sailing the lake. One and a half hours drive away is the Jainimemi National Reserve with a huge variety of sceneries including rivers, lakes, valleys and glaciers, plus a diversity of birds and fauna.



## General Carrera Lake

Called Chelenco by the Tehuelche, the native inhabitants of this place of Patagonia. It is the second-largest lake in South America and the source of the Baker, Chiles largest volume river. Around the lake are several towns that have developed a series of services and activities for tourism. Of particular note are Puerto Bertrand, Rio Baker, Lago Leones, The Marble Chapels, Cochrane and the Northern Ice Cap (Chile's largest reserve of pure water). This area offers an opportunity for the majority of adventure tourism activities with hiking circuits, fly-fishing, rafting & kayaking, horse riding, and mountaineering.

The area contiguous to the General Carrera Lake, Bertrand Lake, and the Baker River Is considered as a Zone of Touristic Interest (ZOIT)

## National Park Cerro Castillo

The park has a surface area of 1179,550 ha. Located south from Coyhaique. Its hiking trails are part of the "Sendero de Chile". It has park ranger, camping areas, and some picnic spots. The main attraction is Cerro Castillo (Castle Hill) its summit is of 2,675 m.



# Coyhaique - Cerro Castillo

## Coyhaique

The regional capital and economical center of the zone. It has all the services and touristic facilities. Placed between the valleys of Simpson and Coyhaique rivers. Here you can find the National Reserve Coyhaique, the Six Lagoon Circuit, the Indian Stone, the monument of the Shepherd, the Craft Fair and others.

# Destination Carretera Austral Sur



## National Reserve Tamango

The reserve has a surface of 6.925 ha. It is located 6 km N.E. from the town of Cochrane, in the north shore of the Cochrane Lake. The reserve has areas for camping, bathrooms and some cabins. The main attraction of this reserve is chance to see a Huemul (deer), being the best season in spring time.

## Tortel

Commune located in the austral archipelagos of the Chilean Patagonia, in the mouth of the Baker river between the Northern and Southern Ice Fields. Caleta Tortel emerges as a town due the exploitation of cypress wood, located in rocky areas and hills, so that is why its inhabitants have built cypress walkways to walk through. Today there are more than 10 km that connects the docks and the houses. It was declared a "National Monument" in the typical zone category in 2001.

It is possible to take an excursion to La Isla de los Muertos (The Island of the Dead) sailing in the Baker, and excursions to the Steffen Glacier, which is part of the San Rafael National Park in Northern Ice Field and the Jorge Montt Glacier is part the Bernardo O'Higgins National Park in the Southern Ice Field.



## Cochrane

Cochrane is the main town of the extreme south of Aysen. With 3.000 inhabitants offers a wide service range for the visitors and attractive places to visit as the National Reserve Tamango, Chacabuco Valley, Monte San Lorenzo, Calluqueo Glacier, Brown and Cochrane Lakes or Baker and Ñadis rivers. All are suitable places to go during the whole year and where you can start nice walks, horse riding o sailings which allows you to appreciate the beauty of this zone.

## Baker River

The great Baker river is one of the mayor tributaries in the country. It rises in the extreme meridional of Bertrand Lake, in the southeast of General Carrera Lake and it has a total length of 200 km which flows into the surroundings of Caleta Tortel. Between its main tributaries are the Neff, Chacabuco, Cochrane, El Salto, Colonia, Los Ñadis, Ventisquero and Vargas rivers.

The Baker river is also a scenery of an adrenaline sport discipline, kayak descending.



## Villa O'Higgins

Villa O'Higgins, a town 600 inhabitants app. Which marks the end of the road of the Carretera Austral and the beginning of the Southern Ice Field. Scientifics, expedition members and adventurers from all over the world arrived here to discover the secrets of this border territory. A network of trails highlighting attractive places with presence of the Cisnes and Cuervo lakes, Mayer river and Mosco or Tigre glaciers. From this place it is possible to visit O'Higgins Lake, a privileged place for recreational fishing and sail to Bahía Bahamondez to access through the lake different touristic attractions.

# Let's Take Care of Aysén Patagonia

Help us to protect it following the next recommendations



Avoid the use of detergents.  
Choose to wash the dishes in your accommodation.



Remember pets are not allowed inside the areas.



Don't interfere nests, holes or den.  
Observe the wild life from a safe distance.



Inside the Parks and Reserves, bathing and motor navigation is not allowed.



Avoid listing music loud. Respect the wild life and other visitors.



Enjoy the rupestrian art, protect it and don't destroy our cultural heritage.



Vehicles can only access until the Park Administration. Enjoy the walk.



Remember the access to the Reserve or National Park has a monetary cost. Payment has to be done in Chilean pesos.



Recreational fishing is just allowed in the National Reserves and you should have your Chilean fishing licence updated.



People in a drunken state should leave the Reserve or Park.



Bring back your waste and throw them away in a trash bin in the nearest city.



The use of fire is forbidden inside Protected Wilderness Areas.



Follow the instructions provided by the Park Ranger, it is the major authority inside the Park or Reserve.

